

## Female Shirts & Necklines



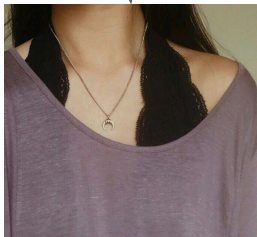
**NOT Acceptable:**  
- No Spaghetti Straps

**Acceptable**

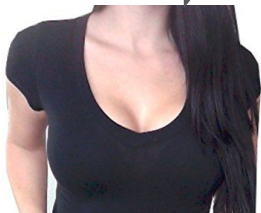


**NOT Acceptable:**

- No Halter Tops
- No Racerback
- No Off the Shoulder



**NOT Acceptable**



**Acceptable**



## Skirt/Shorts Length & Midriffs

**NOT Acceptable:**

- Waist Showing and Skirt is TOO Short



**Acceptable:**  
Skirt Length is Okay

**NOT Acceptable:**

- Waist Showing



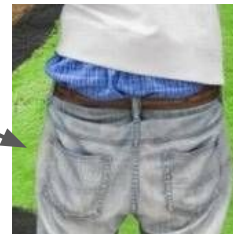
**Acceptable:**

- Short Length is Okay
- Short Shorts are **NOT** acceptable

## Male Clothing

**NOT Acceptable:**

- Underwear/Boxers Show
- No Waist Chains Allowed



**Acceptable:**

- Pants Sit on Waist

**NOT Acceptable:**

- No Sleeveless Shirts



## No Pajamas or Slippers

**NOT Acceptable:**

- No Sleepwear or Pajama-like Pants



**NOT Acceptable:**

- No Slippers or Houseshoes



## Additional Guidelines

- **NO HATS OR HEADWEAR**, Exception: sun hat with full 2" brim for protection from sun
- **NO** Inappropriate images, words, emblems, printing, etc on any clothing
- **NO** spikes or other protruding objects on accessories such as wristbands, belts or necklaces
- **NO** Jeans with holes between waistband and 5 inch inseam.

**In addition to all rules and guidelines, WHS Administration has final say on what is acceptable attire.**